

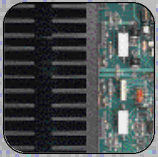
new

products inside

A N T H E M



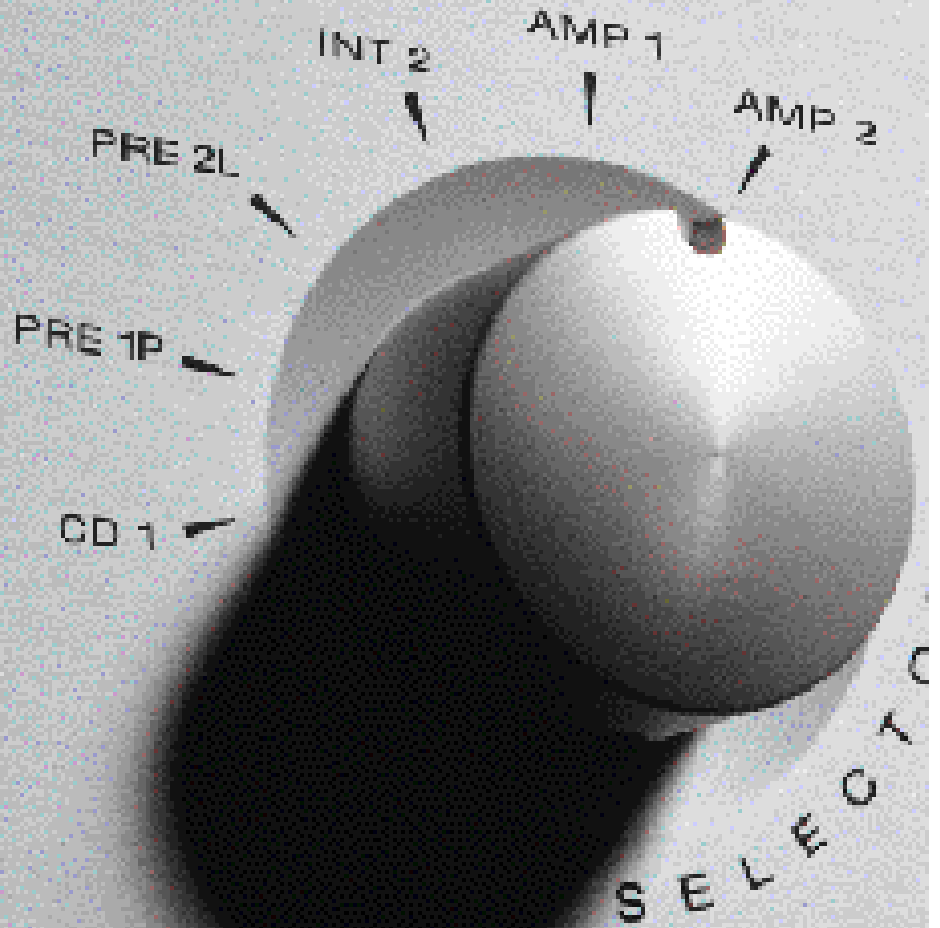
PRE 2L



INTEGRATED 2



AMP 2






the **anthem** commitment

At Sonic Frontiers, we believe it is a misconception that tube electronics are not for everyone. Undeniably, they run moderately hotter and require greater interaction. Yet through conservative operating parameters, innovative circuit design and exceptional build quality, all Anthem products are designed for low maintenance and tube longevity. This is backed by an industry-leading five year limited warranty and one year on the tubes and CD Transport Mechanism.

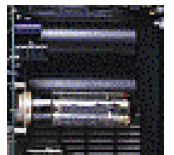
Furthermore, tube audio undoubtedly offers the possibility of a level of involvement and experimentation not offered by solid state. Your dealer or Sonic Frontiers Customer Service Representative is available to assist you to upgrade or replace your tubes when the time comes. Alternately, The Parts Connection (a division of Sonic Frontiers) at 1-800-769-0747, has a large stock of both new and NOS (new old stock) tubes, and a knowledgeable staff to help you choose the tubes best suited to your individual listening needs.

the **anthem** formation

The Anthem CD 1 with ®
The Anthem Pre 1P
The Anthem Pre 2L
The Anthem Integrated 2
The Anthem Amp 1
The Anthem Amp 2

Contents

4	All About Anthem
6	CD 1 CD Changer
8	Pre 1P Phono Stage
new 10	Pre 2L Line Stage Preamp
new 12	Integrated 2 Integrated Amplifier - 90 watts/ch
14	Amp 1 Stereo Tube Power Amplifier - 40 watts/ch
new 16	Amp 2 Stereo Hybrid Power Amplifier - 200 watts/ch
18	Product Specifications



Components such as these, which do not make the quality of the sound their prime directive, are called "low-end or mid-fi". This term describes the lower level of musicality achieved as compared to the high end component which makes improved sound quality and the essence of the musical experience its prime directive.

Although solid state flourished, a few die-hard passionate audiophile companies kept on with their vacuum tube approach and allowed us to be where we are today.

ANTHEM is the best mix of developments in technology, coupled with the musicality of the classic vacuum tube, at a low price range.

Why do we do it better? The SONIC FRONTIERS engineered, ANTHEM electronics have distinct advantages because they are designed with strong fundamental design disciplines:

1. Design conservatively: Do not push the parts and tubes in the circuit harder than they are recommended to be by their manufacturer. By not stressing the parts within, the ANTHEM line gives you years of trouble-free operation. Moreover, by conservatively running the all important vacuum tubes, ANTHEM ensures their long life.

2. Design with non-esoteric tubes: The tubes in ANTHEM components are readily available. It is important to be able to get lots of affordable replacement tubes throughout the life of your ownership of an ANTHEM component. As there is a growing number of vacuum tubes manufactured around the world, we have ensured that the tubes we have chosen to design with in our components are reliable, affordable and musical as well as being available for years to come due to the popularity of their type.

3. Design with the best possible parts: A firmly entrenched high-end canon states that every component added to the signal path imparts its sonic signature to the resulting sound produced. The designers of the ANTHEM line believe that there is no such thing as a "passive" resistor, capacitor, piece of wire or even type of solder - to varying degrees, they will each affect the sound. That is why your ANTHEM component has been manufactured with a critical eye to determining the most sonically critical locations in the circuit - then populating the unit with the best parts in these locations - without the need to go overboard in the less critical positions. Selecting "hall of fame" parts such as Russian military-grade vacuum tubes, MultiCap, Wima and Solen capacitors and Holco, Resista and Draloric resistors as well as Noble volume and balance controls, the ANTHEM line of electronics ensures that you are getting the best sound that tubes can offer while guarantying that each components offers the highest value in respect to price and performance.

4. Design with advanced power supplies and output transformers: We are especially proud of the output transformers for our tube amplifiers. Probably the single most difficult part to get right in a tube amplifier, our newest designs sport the finest grain-oriented silicon alloy M-6 steel cores and advanced multifilar interleaved winding techniques, a result of multi-generation design improvements that have been refined over the last 10 years that SONIC FRONTIERS has been designing output transformers. Furthermore, low leakage inductance and shunt reactance, a key to wide bandwidth and low distortion, allow maximum coupling of music signals to the loudspeaker.

At the other end of the circuit, ANTHEM power transformers are specified and designed to provide cool, conservative and continuous operation under all operating conditions while allowing ample margin for transient currents demanded by the most complex musical events. Supplementing the superb current delivery of our power transformers is the utilization of extra large energy storage capacitors, previously unheard of in equipment of this class.

High performance power supply regulation, a SONIC FRONTIERS hallmark, is used in all critical signal amplification stages. To recap, audio amplification may be simply described as low level AC modulation of a more powerful DC source. From that perspective, it is immediately apparent that any undesired disturbance of the DC source by power line anomalies, interchannel crosstalk or voltage drift could contribute unwanted audible characteristics to the output signal. Designed from the ground up, series or shunt regulation techniques are matched to the specific amplification topology to optimize power supply source impedance and bandwidth while reducing unwanted noise contribution. We have enlisted the use of advanced network analysis techniques using the latest Audio Precision and Hewlett Packard equipment to ensure optimum power supply performance - in other words, the power supplies are not allowed to impart their own sonic signature upon the musical signal.

5. Design the component to be tonally neutral and very transparent: The goal of ANTHEM is to provide the listener with the most musical sound that does not "colour" the original recorded music, itself. As a result of our main design criteria, we have made great progress in attain our sonic goals of tonal neutrality; bass extension and impact; lifelike dynamics; pinpoint imaging and resolution, while not at the expense of musicality and naturalness - something which any customer can experience in their favorite dealer's sound room and/or your system at home.

How does ANTHEM achieve this without the typically high cost? ANTHEM is the best within boundaries. We have maintained the highest value-oriented design strategy, spending where it counts the most, while providing to you a high end sound at an affordable price. All components in the complete ANTHEM product line are designed this way - from our CD Changer, to our preamps, power amp and integrated amplifier. No longer does high-end have to be a spectator sport. This means that new groups of music lovers can afford to discover this passionate pursuit of music reproduction excellence in the home. ANTHEM benefits from the design knowledge gained in the "cost no object" approach associated with the development of the SONIC FRONTIERS product line. In fact, ten years ago, experienced audiophiles could have expected to pay at least twice as much for sound and construction quality that was this good. In addition, unlike the disadvantages of choosing or finding such a product from a small esoteric single-product company, ANTHEM is backed by the full research and development resources of one of the largest manufacturers of consumer tube electronics in the world, SONIC FRONTIERS INTERNATIONAL.

How much work is it to own tubes? The care and maintenance of ANTHEM is unlike the finicky tube products sold in the early audiophile days. Nominal maintenance includes no more than a light dusting and a general replacement of the tubes every 3 to 5 years. Each ANTHEM product is guaranteed for 5 years with a full 1 year tube



warranty, typically 4 times longer than other tube electronic manufacturer's products. However, given the parts quality and conservative approach of its design, it is no wonder that you can rely on these components to give you many years of trouble-free musical pleasure.

Does ANTHEM work with my equipment? The ANTHEM line has been designed and manufactured with specific technical goals to ensure compatible interconnectivity with essentially all of today's state-of-the-art electronics, be it vacuum tube, solid state, or hybrid and work synergistically with the broad spectrum of speaker systems available today. Through careful parts selection, power supply and output transformer design, these components have low source impedance and high damping factor minimizing interaction with difficult loudspeaker loads. Gone are the cliché colourations typified of old fashioned tube electronics such as loose, uncontrolled bass and high frequency softness. Instead, ANTHEM offers tight, well defined bass and clear articulate highs, with no sacrifice of mid-range purity associated with the best that tube & hybrid amplification has to offer.

Why is ANTHEM better than the other companies? ANTHEM is manufactured by SONIC FRONTIERS INTERNATIONAL, in Oakville, Ontario, Canada (a suburb of Toronto). In 1987, SONIC began its venture into the high end market when its founders felt that they could design and produce audio components of higher quality, performance and value. Through their expertise as specialty audio electronic parts distributors to many of the major audio OEM's, recording studios, and life long dedicated "build it yourself" hobbyists, SONIC has learned the importance of choosing the finest resistors, capacitors, tubes and complete parts complements for their designs. The ANTHEM line carries on with this tradition and offers the consumer a product of the finest build quality in its class, with performance equal to components from other companies costing many times more.

The ANTHEM line of vacuum tube & hybrid electronics focuses on these principles while holding firm to a never before achieved level of value as defined by the performance of the equipment, compared with the cost of purchasing it.

ANTHEM truly is the KEY TO HIGH-END AUDIO.